



# FINNISH CHAMPIONSHIPS IN SPRINT ORIENTEERING AND IOF WORLD RANKING EVENT 20.9.2025, TAMPERE, FINLAND

## BULLETIN 1

Finnish Championships in sprint orienteering will be organized on 20.9.2025 in Tampere. Qualification will be held in the morning and finals will be run in the afternoon.

### EVENT ORGANIZER

Tampereen Pyrintö / Orienteering

### MAIN OFFICIALS

Event director: Olli Mylläri, ollimyllari@gmail.com, +358 40 733 07 44

Course setters: Lauri Kahila

Result service: Keijo Viilo

WRE contact person: Sini Lepistö, sini.t.lepisto@gmail.com

Technical Adviser and IOF Event Adviser: Johan Uusimäki

Course controller: Riku Kopra, Oriveden Ponnistus



#### EVENT WEBSITE

<https://tampereenpyrinto.fi/suunnistus/kilpailut/sm-sprintti-2025/>

<https://eventor.orienteering.org/Events/Show/8307>

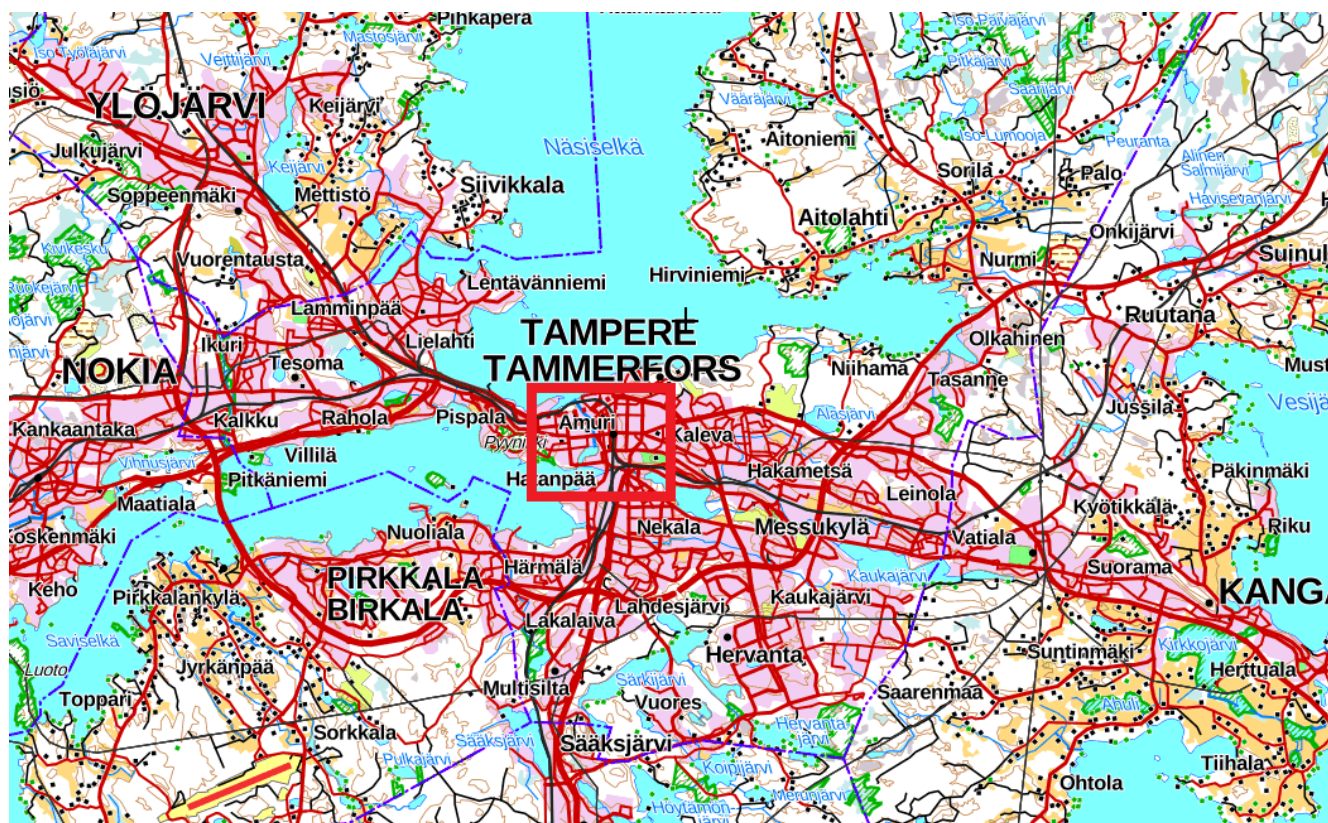
#### VENUE AND PARKING

Tampere is the biggest inland city of Finland. Its growth in the 1800s was largely due to industrial development around Tammerkoski rapids. The competition area extends to both sides of the mentioned waterway, located right at the heart of the city. Arena location will be published in Bulletin 2.

Moreover, information regarding parking will be published on the event website.

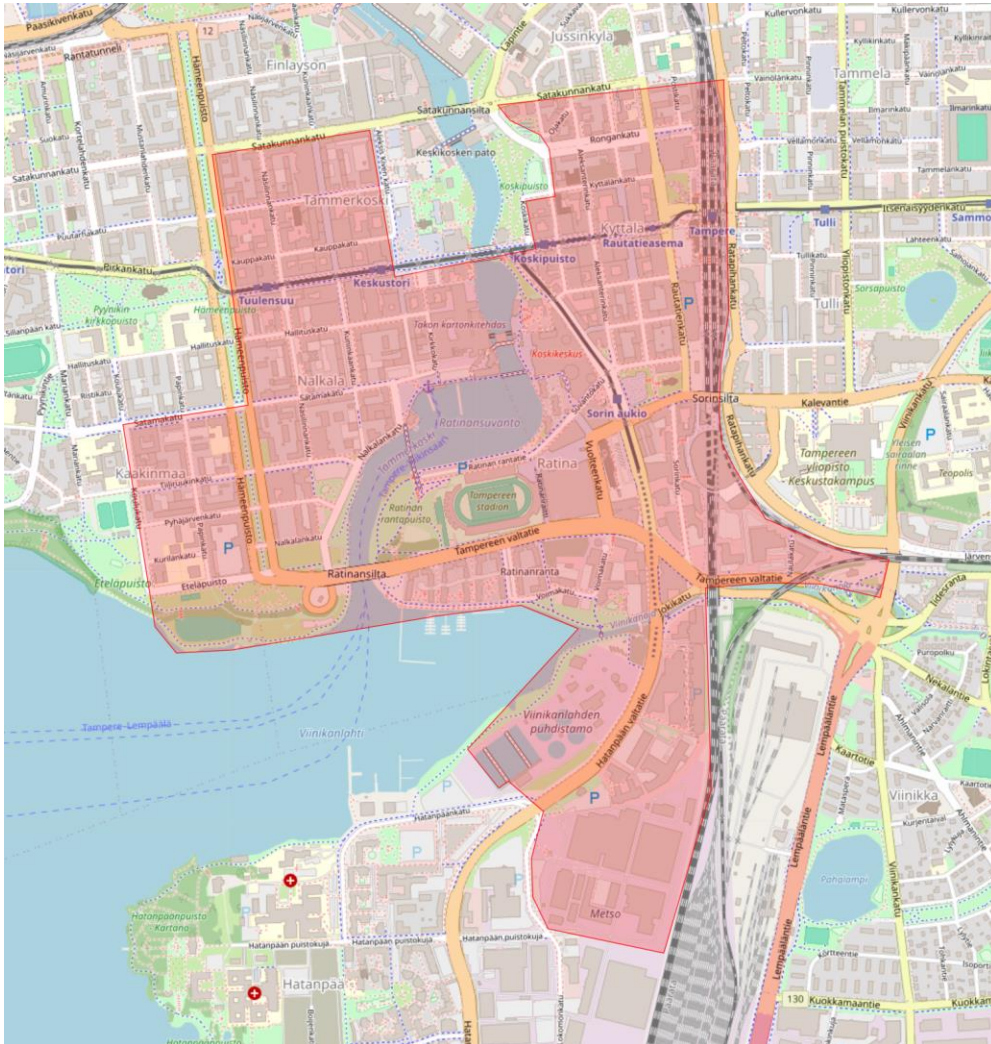


GENERAL MAP OF THE REGION AND EMBARGOED AREA





The embargoed area is indicated on the map below. You can see the same information in [Finnish Map Registry](#).





## EVENT INFORMATION

### COMPETITION RULES

The rules established by both the International Orienteering Federation and Finnish Orienteering Federation will be applied in the competition. The IOF rules are available on the following website:

<https://orienteering.sport/orienteering/competition-rules/>

The rules of the Finnish Orienteering Federation are available on the website:

<https://www.suunnistusliitto.fi/kilpailu/saannot-ja-ohjeet/lajisaannot/> (only in

Finnish)

Spiked shoes and shoes with studs are forbidden in the competition.

Competitors shall not use or carry telecommunication (voice or text) equipment between entering the prestart area and reaching the finish in a race, unless the equipment is approved by the organizer. GPS-enabled devices (watches etc.) can be carried provided if:

- they have no map display
- they have no telecommunication ability
- they are not used for navigation purposes.

However, the organizer has the right to specifically forbid the use of such equipment. The organizer may require competitors to carry a tracking device and/or a GPS data logger.

### CLASSES AND WINNING TIMES

Classes M21 and W21 have WRE status. Entry to the competition implies entering the Qualification race.



Sprint distance in WRE classes. Estimated winning times 12-15 min in Qualification race and 12-15 min in Finals. Approximately 50 of the top-performing athletes will advance to the finals based on their qualification results.

## PUNCHING SYSTEM

The electronic punching system Emit will be used. Rental Emit cards are available from the event organizer, fee 5 €. Need for Emit card rental must be issued with the entry. If the rental Emit card is not returned after the competition, there will be a charge of 80 €.

## EVENT PROGRAM

Quarantine zone will be same in both starts. Indoor area and toilets will be available.

Event	Time	Notes	Distance to quarantine
<b>Qualification first start</b>	09.00	Quarantine closes at 09.00	Informed in Bulletin 2
<b>Final first start</b>	13.00	Quarantine closes at 13.00	Informed in Bulletin 2

## ENTRIES AND ENTRY FEES

Entries and payments should be made primarily through IRMA service ([instructions for creating IRMA-account](#)) or alternatively via Eventor (those who don't have access to IRMA service). All WRE competitors make an entry to classes M/W21E. Entry fee in these classes is 51 €. Emit card number must be included in the entry.

Need for Emit card rental must be issued with the entry. If Emit card number is missing, the organizer will reserve an Emit card and charge 5 €.

The IOF World Ranking system only uses the Latin alphabet from A to Z. It is very important for all runners to check that the information about them is correct. Please check the following: the spelling of your first and last name, year of birth and nationality. If you find any mistakes, please find instructions on <https://eventor.orienteering.org/Home/HelpAndSupport>



It is not possible to pay through Eventor. The bank details for entry fee payment without access to IRMA are as follows:

Message: <Competitor's name>, SM-Sprint 2025

Account owner: Tampereen Pyrintö suunnistusjaosto

Account owner address: Pyhäjärvenkatu 5 H, 33200 Tampere

Bank name: Tampereen Seudun Osuuspankki

Bank address: Hämeenkatu 12, 33100 Tampere

IBAN: FI54 5732 2620 1535 77

BIC: OKOYFIHH

Payments are accepted in euros only. Please indicate the names of the competitors in the message field of the payment form.

Entries and payments must be made no later than **Sept 11th 2025 at 23:59**. No late entries allowed.

## IOF ID

When registering via Irma, WRE athletes must have IOF IDs included in their Irma profile. This is automatically included in registration via IOF Eventor.

Athletes who do not have an IOF ID will get one by registering a user account in IOF Eventor:  
<https://eventor.orienteering.org/Register>

## TERRAIN

The terrain consists mainly of urban areas with paved paths and lawns, and associated parklands.

## MAP

Scale: 1:4 000, contour interval: 2 m, printing 9/2025. Mapping by Eemil Koskinen. The competition maps are in plastic cases. Map size is A4.

## CLIMATE



In September the weather in Tampere can be anything from warm and sunny (15-20 degrees Celsius) to chilly, windy and rainy (5–10 degrees Celsius).





## ACCOMMODATION AND FOOD

Restaurant and take-away café offering coffee, sandwiches, soup lunches, and beverages. Additionally, plenty of other restaurants are within walking distance from the event center. More information regarding the offering in bulletin 2.

There are many accommodation possibilities in Tampere and a couple of offers are mentioned in the competition website. The price of accommodation in Tampere is mostly between 100 and 150€/night/person.

More possibilities from Visit Tampere website: <https://visittampere.fi/en/accommodation/>

**Please note that it is not allowed to stay in the embargoed area.**

## SHOWERING

There is a possibility to shower indoors in the event center. If other arrangements are done, these will be highlighted in Bulletin 2.

## TRANSPORT

No transport offered by the organizers. It is easy to access the competition area by public transportation and car. Instructions for arriving by public transport will be announced on the event website before the competition.

## VISA REQUIREMENTS

According to current regulations, citizens of some countries must obtain a visa to enter Finland. Please check the following website for more information: <https://um.fi/entering-finland>. Visas should be applied for at your closest Finnish embassy. Please note that conditions of entry may change. All participants are advised to keep themselves updated on the situation by consulting their local Finnish embassy.

## TRAINING OPPORTUNITIES

Model training possibilities are published on the event website.





## FINAL EVENT INSTRUCTIONS AND START TIMES

There will be more information on the event website

<https://tampereenpyrinto.fi/suunnistus/kilpailut/sm-sprintti-2025/>

closer to the date of the competition. Bulletin 2 will be published in early September.