



FINNISH CHAMPIONSHIPS IN SPRINT ORIENTEERING AND IOF WORLD RANKING EVENT, TAMPERE, FINLAND

BULLETIN 2

Finnish Championships in sprint orienteering will be organized on 20.9.2025 in Tampere. Qualification will be held in the morning and finals will be run in the afternoon.

EVENT ORGANIZER

Tampereen Pyrintö / Orienteering

EVENT OFFICE

The competition info is located in the competition centre, which opens at 7.30 am. The information desk serves e.g. in matters related to emit changes and lease emit. If you have any questions before the event, please send an email to kilpailut.suunnistus@pyrinto.fi.

MAIN OFFICIALS

Event director: Olli Mylläri, ollimyllari@gmail.com, +358 40 733 07 44

Course setters: Lauri Kahila, Arto Itkonen, Eero Kahila

Result service: Keijo Viilo

WRE contact person: Sini Lepistö, sini.t.lepisto@gmail.com

IOF Event Adviser and Technical Adviser: Johan Uusimäki

Course controller: Riku Kopra, Oriveden Ponnistus

Jury: Mikko Niskanen (chair), Mikko Eskola, Katri Niittymäki



EVENT WEBSITE

<https://tampereenpyrinto.fi/suunnistus/kilpailut/sm-sprintti-2025/>

<https://eventor.orienteering.org/Events/Show/8307>

VENUE, PARKING, AND APPROACHING COMPETITION CENTER

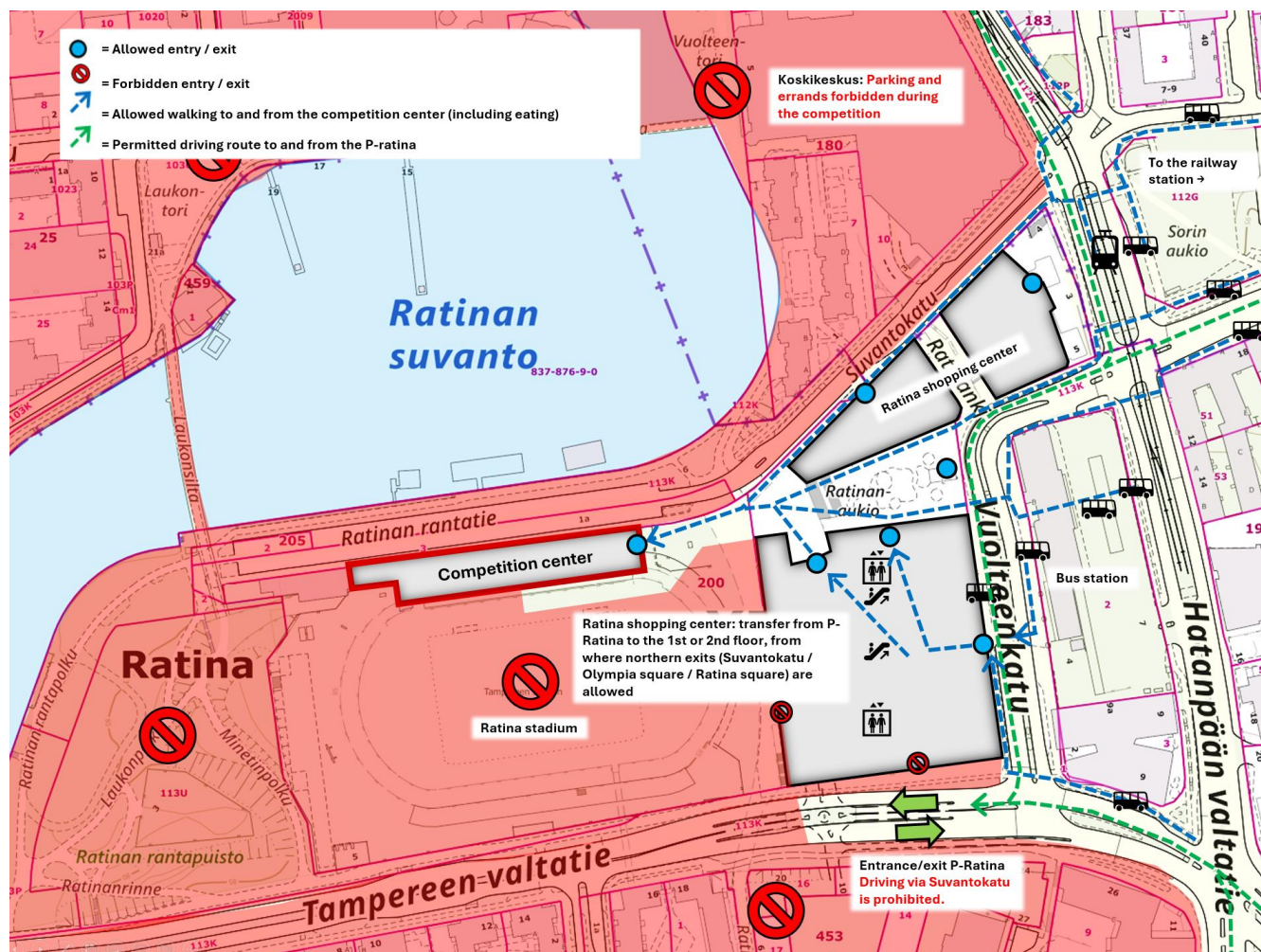
The competition centre is the Ratina Stadium, at Ratinan Rantatie 1, 33100 Tampere. See the arrival on the map below.

The organizers do not offer parking. Paid public parking is available in designated parking garages and on roadsides outside the no-practice zone, as directed by parking providers. The parking garage of the Ratina shopping centre in the immediate vicinity of the competition centre may be used, even though it is in the training ban area. Entry and exit is only allowed from the southern entrance.

Participants must use the routes shown in the picture below to get to the vicinity of the competition centre and from parking at the venue. Arriving at the venue from elsewhere will lead to disqualification. Arriving on foot along the Tampere highway from the west is prohibited.

We recommend using public transport! The map below shows bus and tram stops in the nearby area, which can be accessed from different parts of the Tampere region, for example, by leaving your own car in the park-and-ride area. You can check the timetables here, for example: <https://www.nysse.fi/> The bus station for those coming from further away is located in the immediate vicinity of the competition centre and the railway station is not far away.

There is no supervised storage of goods at the competition venue, but storage takes place at your own risk in a covered grandstand building reserved entirely for the event.



The organizers do not provide transportation. The competition area can be reached by public transport. More information is available on the competition website.

Tampere is Finland's largest inland city, and its growth was significant in the 1800s, boosted by industrial development near the Tammerkoski rapids. The competition area includes both sides of this waterway located in the city center.

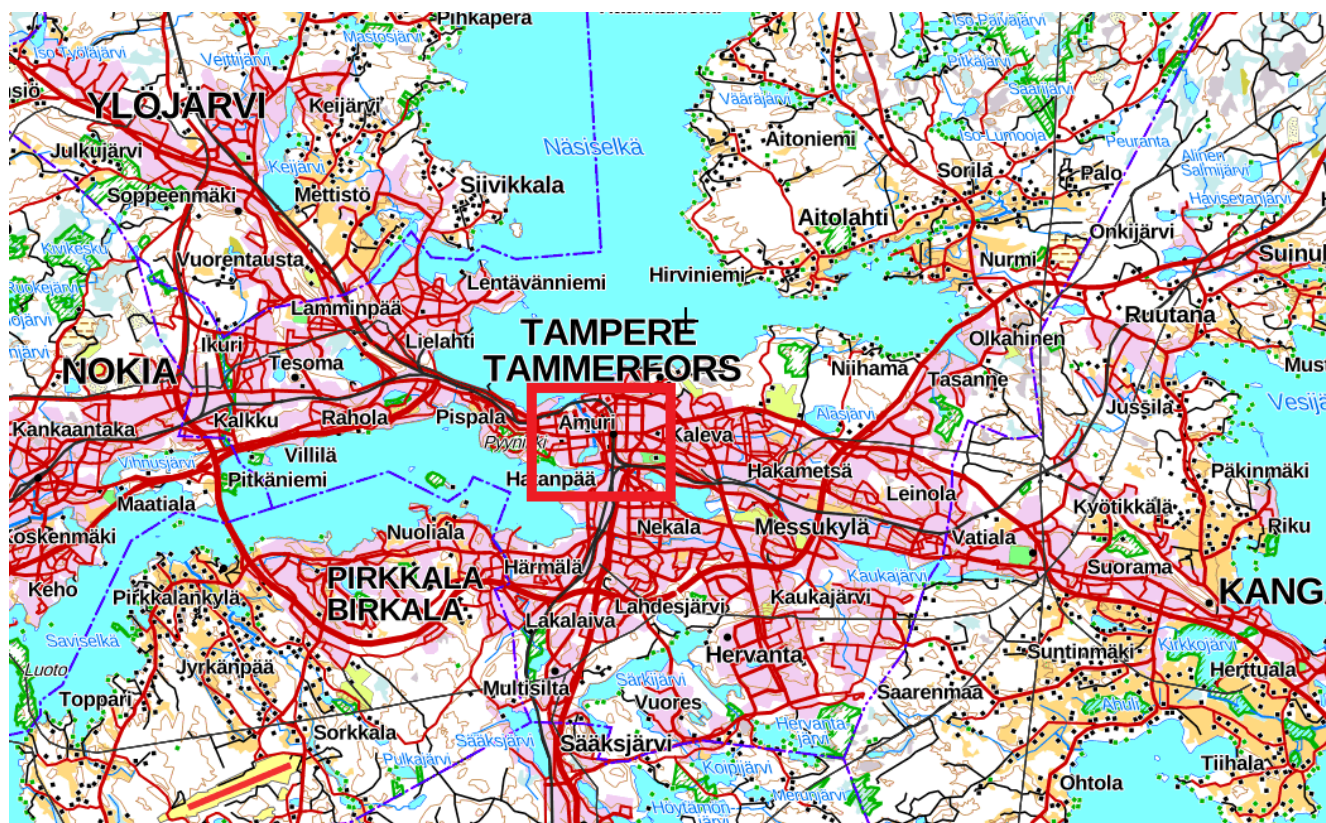
The Ratina Stadium is an athletics and football stadium located in the Ratina district, which was opened in 1965. The stadium has a capacity of 16,800 spectators. According to the Finnish Heritage Agency, the Ratina Stadium is a nationally significant built cultural environment. It is protected on architectural and landscape grounds. The stadium is located in Ratinanniemi at the



point where the Tammerkoski rapids flow into Lake Pyhäjärvi, and it forms the façade of the peninsula towards the city centre. The construction of the stadium was related to the Helsinki Olympics, but its current appearance and structures were implemented according to Timo Penttilä's drawings in 1963–1966. The structures are a demonstration of Bertel Ekengren's engineering skills.



GENERAL MAP OF THE REGION AND EMBARGOED AREA

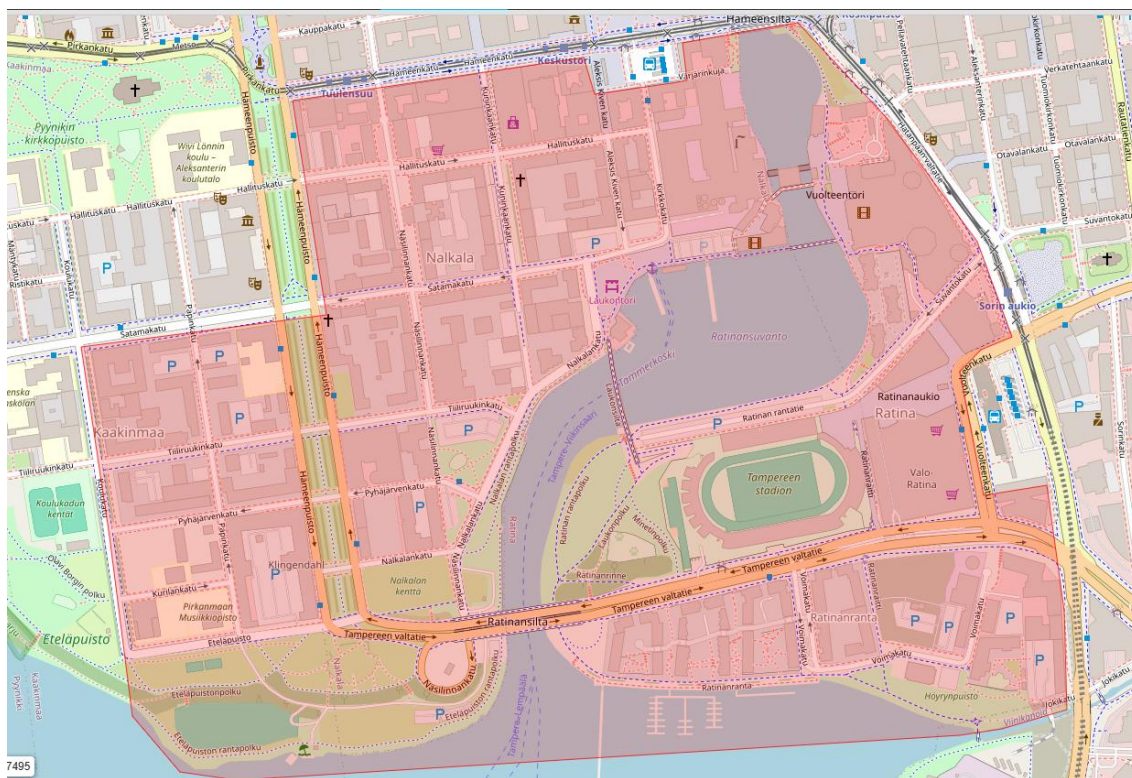




The no-practice zone is marked on the map below. You can see the same information in the Map Register of Finland. The complete ban on competition and training in sprint competitions will take effect two weeks before the competition day. After this, all movement in the competition and training ban area is prohibited.

Please remember that it is forbidden to enter the prohibited area also during the competitions and between the qualification and the final competition! Competitors are not allowed to enter the competition terrain until the competition has officially ended (the protest period has ended and all open protests have been resolved). Failure to do so will result in disqualification from the competition.

The services of the Ratina shopping centre can be accessed from the competition centre along the routes marked in the picture above. You must enter and exit the buildings, the shopping centre's parking garage and outside the training ban area via a marked route!





COMPETITION RULES

The rules established by both the International Orienteering Federation and Finnish Orienteering Federation will be applied in the competition. IOF rules take precedence in WRE series. The IOF rules are available on the following website:

<https://orienteering.sport/orienteering/competition-rules/>

The rules of the Finnish Orienteering Federation are available on the website:

<https://www.suunnistusliitto.fi/kilpailu/saannot-ja-ohjeet/lajisaannot/> (only in

Finnish)

Spiked shoes and shoes with studs are forbidden in the competition.

Competitors shall not use or carry telecommunication (voice or text) equipment between entering the quarantine area and reaching the finish in a race, unless the equipment is approved by the organizer. GPS-enabled devices (watches etc.) can be carried provided if:

- they have no map display
- they have no telecommunication ability
- they are not used for navigation purposes.

TERRAIN

The terrain consists of urban areas with urban blocks, more open built-up areas, paved and unpaved paths, lawns, park and field areas, as well as bridges and sports facilities. See the map register of the Finnish Orienteering Federation and the old orienteering maps of the area.



MAP

Scale: 1:4000 or 1:3000, contour interval: 2 m, printing 9/2025. Mapping by Eemil Koskinen. The competition maps are in plastic cases. Map size is A4.

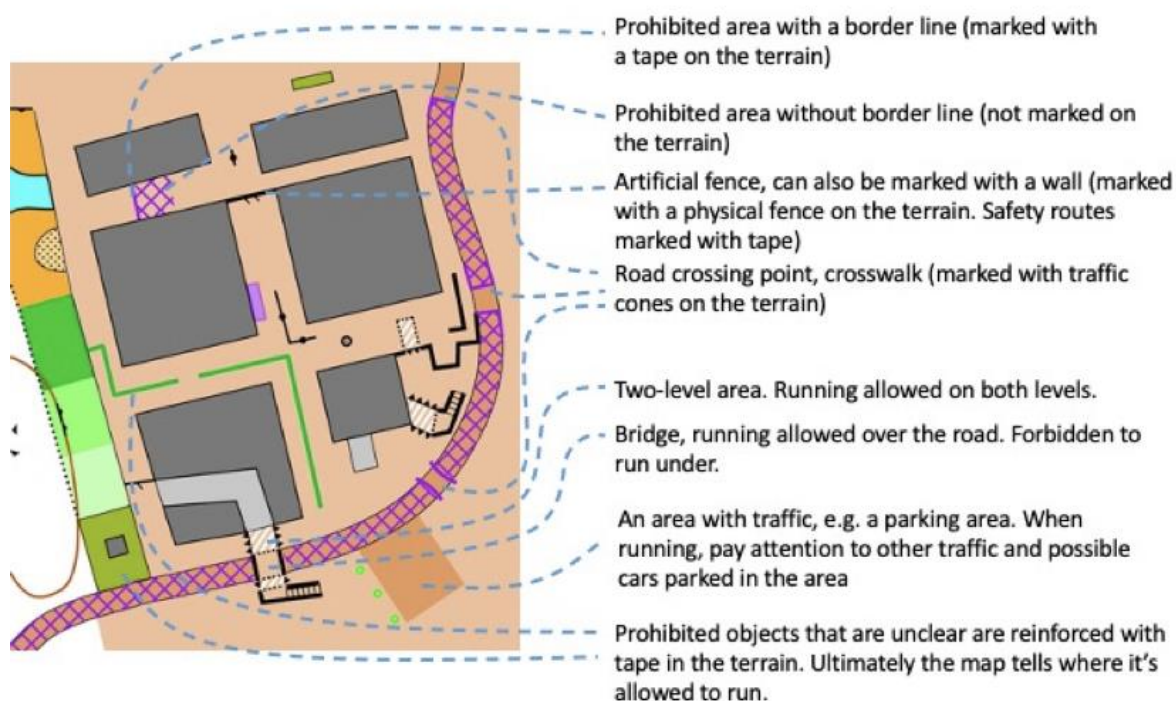
PROHIBITED TARGETS IN SPRINT ORIENTEERING

The prohibited destinations in sprint orienteering are shown in the figure below. Review them before participating in the Finnish Championships.

	Uncrossable cliff
	Uncrossable body of water
	Uncrossable marsh
	Impassable vegetation, hedge
	Bridge or tunnel entrance (Map mark can only be pad)
	Uncrossable / passable wall
	Prohibited area (e.g., yard or flowerbed)
	Building
	Uncrossable line feature (pipeline)
	Passage forbidden
	Prohibited area
	Temporary structure or closed area



PROHIBITED AREAS AND CROSSINGS



The attached model picture highlights cases that may occur in the Finnish Championship sprint. To reinforce the prohibited areas, a red-yellow plastic tape with the text STOP has been used in the terrain. Prohibited areas and prohibited objects in sprint orienteering will be monitored and a violation will lead to disqualification of the competitor. The competition has road crossings in all categories. Traffic controllers monitor competitors' road crossings and, if necessary, steer cars. Compliance with the rules is important for fair competition, safety and respect for local residents.

ROADS AND CROSSINGS

Some of the roads are marked on the map as a prohibited area. The permitted crossings have been marked in the terrain with cones, from which a plastic strip has been pulled along the edge of the roadway about 5 metres away from the crossing. The competitor must pass between the cones at both ends of the crossing. The crossing points are supervised, and the correction will lead to disqualification.



On the map, the crossing points are marked with the crossing symbol 710.1 or the border line of the prohibited area. The crossing points of both marking methods look similar in the terrain.

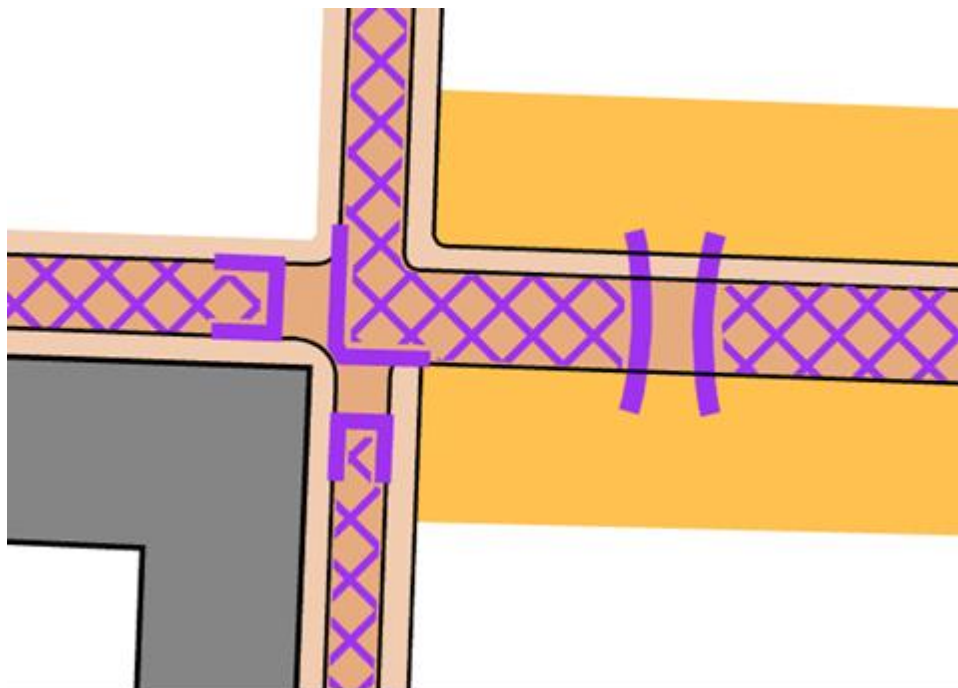


Image: Prohibited roadways and crossings.

Roads may only be crossed between the traffic cones marked at the crossing points marked on the map (see the picture below).



Image: An example of marking a road crossing in terrain. The color of the side bands may differ from that shown in the figure. The red arrows describe an example of a route.

ARTIFICIAL FENCES AND LACING

The artificial fences marked with the insurmountable fence sign (symbol 518) are mainly metal riot fences in the terrain.

The prohibited areas marked on the map with a purple diagonal grid are demarcated in the terrain with a red-yellow plastic strip at least in those places where the edge line of the area is uniform. At walkways, the tape can run on the ground.

Other prohibited sites in accordance with the rules of the sport have been demarcated in the terrain with a red-yellow plastic strip where necessary. These recordings are not separately marked on the map.



SPECIAL TARGETS



- Substantial play frame or garden swing
- group of deep collection containers, waste bin
- statue, artwork





Image: A significant group of deep collection containers are marked as O-special sites when it does not obstruct passage.



Image: The row of deep collection containers that prevents access is marked as an insurmountable wall.

STAIRWAYS

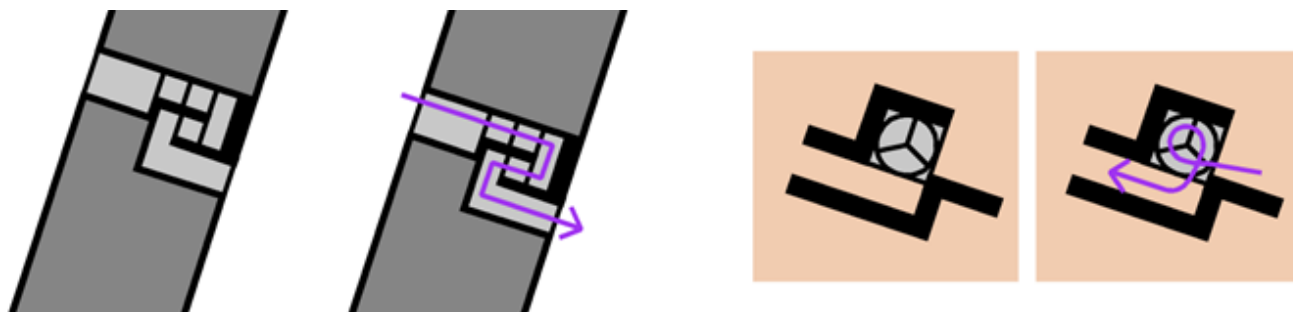


Image: Passage in a narrow staircase and spiral staircase.

The qualification competition uses a staircase, not all of the walls of which could be depicted with the symbol of an insurmountable wall. In addition, a spiral staircase is used in the qualifying competition, which is depicted on the map according to the model image.

There are also plenty of staircases in the final, some of which are narrow, and where you go in both directions. We hope that competitors will exercise patience and take other competitors into account in order to prevent collisions.

TWO-LEVEL AREAS

The competition area has challenging two-level areas. It is worth getting to know the description style of two-level areas in more detail, for example, here – IOF-Guidelines for complex urban structures.

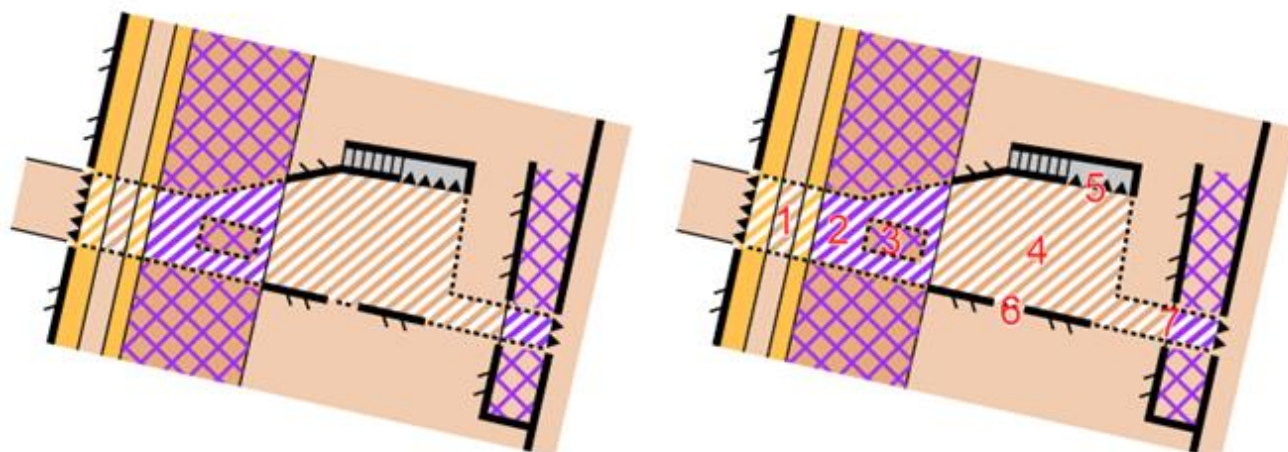


Figure: Example of a two-level area.

Make sure you understand the situations marked in the sample image:

1. Access is allowed on the upper and lower levels
2. Access is prohibited on the upper level, walking is allowed on the lower level
3. Access is prohibited on the upper and lower levels (i.e. there is a rectangular obstacle on the lower level, but it is possible to pass)
4. Access is allowed on the upper and lower levels
5. Access to the lower level via a covered staircase. On the upper level, the entrance to the lower level is visible as a wall.
6. There is an opening in the fence on the upper level, there is no opening in the wall on the lower level.
7. The fence continues on the upper level over the tunnel. For clarity, the fence symbol is truncated. The barrier caused by the fence is indicated in some other way (in this case, with purple map markers of the forbidden area)

CONTROL DESCRIPTIONS

The control descriptions are printed on the map. Separate control descriptions are distributed in all classes both in the qualification and in the finals. Loose control descriptions are available in



the start box. See the section on the operation of the outputs. There are no attachment devices available for control descriptions. The maximum size of the attributes is 180x50mm.

CONTROLS

There are control flags and Emit punches at the controls. Both are attached to the checkpoint stand. The checkpoints are wooden. The model control can be seen at the guide pole, where there is also an Emit test.

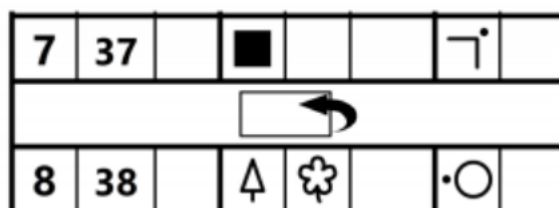
CLASSES AND WINNING TIMES

Classes, distances and the number of controls are described in the Qualification competition and Final competition.

The sprint distance applies to the WRE classes, and the expected winning times are 12–15 minutes in both the qualifiers and the finals.

MAP FLIP

The turn of the map is described in the control descriptions as in the attached image.



After the map has been turned, the new starting point is marked on the map as follows.







START LISTS

The start lists are compiled in accordance with the Finnish Orienteering Federation's rules and the Finnish Championships' separate instructions. In the M21 and W21 series, the start list for the qualification is determined by the IOF's world ranking points.

The start lists for the qualifying competitions are available on the website no later than 18.9.2025 at 9.00 a.m. and on the day of the competition at the competition centre and start area. Please check your EMIT number in the start list; Any changes must be reported in accordance with the 'Emit card check' instructions.

The start lists for the A and B finals will be published on the competition website and at the competition centre as soon as the results of the qualifying competitions are ready.

The start times of the A-finals are based on the results of the qualifiers, so that the best competitors start last. In the B-finals, all classes will be carried out with an intermediate start. Competitors who do not have an approved result from the qualification will be drawn to the beginning of the B-final series.

The M/W21 B-finals will be held with an intermediate start. The starting order is formed from the results of the qualifying competition in reverse order and the start intervals are one minute. The B-finals will be divided into several groups based on the results of the qualifying competition, so that the best will be placed in the first group, the next best in the next group, and so on. The aim is to form the groups as evenly sized as possible.

EVENT PROGRAM

Event	Time	Notes	Distance to quarantine
Qualification first start	09.00	Quarantine closes at 09.00	1300m
Final first start	13.00	Quarantine closes at 13.00	1300m
First final start M21	16:35	Prize giving around 17.30	1300m



First final start W21	15:40	Prize giving around 17.30	1300m
----------------------------------	-------	---------------------------	-------

VARUSTEKULJETUS

From the start threshold there is equipment transport to the competition centre for both the qualification and the final competition. Equipment can be left in a separately marked place in the starting threshold area, clearly labelled. N.B. Bring your own rainproof bag for your gear. Markers are used at the threshold of departure to mark the bags. The equipment can be picked up from the competition centre and it is returned only by showing the number tag.

QUALIFYING COMPETITION, MORNING

The qualification competition will be held in all categories. The first departure is at 9.00. There are two races in qualifying, Start 1 and Start 2.

All classes have a quarantine that opens at 8:00 and closes at 9:00. The distance from the competition centre to the quarantine is 1300m, the signs are marked with a red ribbon. You must not deviate from the signposting. The departure threshold area has a limited and supervised warm-up area, indoor space and toilets.

CLASS AND COURSE INFORMATION

No refreshment controls available.

Class & Group	Start	Course Length	Controls	Number of finalists
D14K1	L2	1,8	12	20
D14K2	L2	1,8	12	20
D15K1	L1	2,1	10	34
D16K1	L1	2,1	10	30
D17K1	L1	2,3	11	38
D18K1	L1	2,3	12	25
D20K1	L1	2,3	12	20
D20K2	L1	2,3	11	20
D35K1	L1	2,2	11	20
D40K1	L1	2,2	11	27



D45K1	L2	2,0	10	20
D45K2	L2	2,0	10	20
D50K1	L2	1,9	10	20
D50K2	L2	2,0	10	20
D55K1	L2	1,8	10	36
D60K1	L2	1,7	9	27
D65K1	L2	1,6	8	28
D70K1	L2	1,4	7	17
D75K1	L2	1,4	7	13
D80K1	L2	1,3	6	8
D85K1	L2	1,3	6	2
D90K1	L2	1,3	6	1
H14K1	L2	2,0	10	38
H15K1	L1	2,1	11	38
H15K1	L1	2,1	12	20
H16K1	L1	2,3	11	20
H16K2	L1	2,3	10	20
H17K1	L1	2,4	11	30
H18K1	L1	2,5	14	33
H20K1	L1	2,7	14	36
H35K1	L1	2,6	10	21
H40K1	L1	2,4	12	20
H40K2	L1	2,4	11	20
H45K1	L1	2,4	11	20
H45K2	L1	2,4	12	20
H50K1	L1	2,4	11	20
H50K2	L1	2,4	12	20
H55K1	L2	2,2	12	20
H55K2	L2	2,2	12	20
H60K1	L2	1,9	11	20
H60K2	L2	2,0	11	20
H65K1	L2	1,9	10	37
H70K1	L2	1,7	10	20
H70K2	L2	1,7	10	20
H75K1	L2	1,7	9	33



H80K1	L2	1,4	7	20
H85K1	L2	1,3	6	9
H90K1	L2	1,3	6	1
M21Q1	L1	3,3	16	13
M21Q2	L1	3,3	18	13
M21Q3	L1	3,3	17	13
M21Q4	L1	3,3	18	13
W21Q1	L1	2,7	13	17
W21Q2	L1	2,7	14	17
W21Q3	L1	2,7	14	17

START PROCEDURES FOR QUALIFICATION

Start 1 will be used for classes M/W21 during the qualification race. Participants should follow the designated red-striped 1300m route to quarantine, where the pre-start area is located. All competitors are required to proceed to the start 20 minutes before their designated start time via route marked with blue stripes to Start 1 and route marked with yellow stripes to Start 2, and must always remain on the marked route.

Bib numbers are to be found in the quarantine area. Own safety pins are required for bib numbers! Emit backup patches are found in the pre-start and start.

Note: In the quarantine area, using phones or any devices to track the competition or communicate outside is not allowed. Coaches and supporters are also prohibited. Viewing any maps, old or new, in the area is forbidden.

- 20min before start: leave from pre-start to start
- 4 min before start: start call-in
- 3 min before start: emit clear
- 2 min before start: control descriptions, no attachment supplies are provided
- 1 min before start: moving to the maps, the map may be taken at the time of start

FINAL COMPETITION, AFTERNOON

The start lists for the final can be found on the competition website as soon as the qualification results are official. The start interval for the final is 1 minute.



There are two races in the finals, Race 1 and Race 2. In the final competition, there is a start threshold that applies to the A-final series. The start threshold is the same as in the qualifier and closes at 13:00. The distance to the starting threshold is 1200m, the markings are marked with red ribbons. The signposting is different from the qualification competition. You must not deviate from the signposting. The departure threshold area has a limited and supervised warm-up area, indoor space and toilets.

CLASS AND COURSE INFORMATION

There are no drinking checkpoints.

Class	Start	Length	Number of controls
D14	L2	2,5	16
D14B	L2	2,5	16
D15	L2	2,8	14
D15B	L2	2,8	14
D16	L2	2,8	14
D16B	L2	2,8	14
D17	L1	3,0	13
D17B	L2	2,7	11
D18	L1	3,0	13
D18B	L2	2,7	11
D20	L1	3,1	14
D20B	L2	2,7	11
D35	L2	2,9	12
D35B	L2	2,9	12
D40	L2	2,9	12
D40B	L2	2,9	12
D45	L2	2,7	11
D45B	L2	2,7	11
D50	L2	2,4	12
D50B	L2	2,4	12
D55	L2	2,4	12
D55B	L2	2,4	12
D60	L2	2,1	12



D60B	L2	2,1	12
D65	L2	1,9	10
D65B	L2	1,9	10
D70	L2	1,9	10
D70B	L2	1,9	10
D75	L2	1,7	9
D75B	L2	1,7	9
D80	L2	1,5	8
D85	L2	1,3	7
D90	L2	1,3	7
H14	L2	2,9	21
H14B	L2	2,9	21
H15	L1	3,1	15
H15B	L2	2,8	15
H16	L1	3,2	14
H16B	L2	2,8	15
H17	L1	3,3	17
H17B	L2	3,1	17
H18	L1	3,3	17
H18B	L2	3,1	17
H20	L1	3,6	16
H20B	L2	3,1	17
H35	L1	3,4	15
H35B	L2	3,3	17
H40	L1	3,4	15
H40B	L2	3,3	17
H45	L1	3,2	14
H45B	L2	3,1	16
H50	L1	3,1	15
H50B	L2	3,0	14
H55	L2	2,9	16
H55B	L2	2,9	16
H60	L2	2,7	15
H60B	L2	2,7	15
H65	L2	2,5	12



H65B	L2	2,5	12
H70	L2	2,4	12
H70B	L2	2,4	12
H75	L2	2,1	11
H75B	L2	2,1	11
H80	L2	1,7	9
H80B	L2	1,7	9
H85	L2	1,5	8
H90	L2	1,3	7
M21	L1	4,1	22
M21B1	L2	3,8	22
M21B2	L2	3,4	15
M21B3	L2	3,3	17
W21	L1	3,6	18
W21B1	L2	3,1	16
W21B2	L2	3,0	14

START PROCEDURES FOR FINAL

At the start of the A-final series, there is also a pre-start 20 minutes before the actual start time. The pre-start is at the start threshold. A-finalists must proceed to Start 1 and Start 2 marked with blue ribbons and always stay on the marked route.

The B-finalists, including those competing in the W/M21B series, as well as the A-finals series D80, D85, D90, H80, H85 and H90, do not pass through the start threshold. If. series and all B-finalists will use Start 2. The distance from the competition centre to the start (400m) is clearly marked with white lacing. It is strictly forbidden to leave the marked route.

M21 and W21 A-finalists will wear a number vest at the start threshold and receive a GPS device at the start 5 minutes before the start. The B-finalists will use their qualifying numbers in the final. Check strips can be found at the departure threshold and at the start. The organizer may require competitors to have a tracking device and/or a GPS data logger. A-finals series collect their numbers at start threshold. Those A-finals series that do not pass the start threshold and proceed straight to Start 2 can collect their numbers from competition centres info.



Note: In the quarantine area, using phones or any devices to track the competition or communicate outside is not allowed. Coaches and supporters are also prohibited. Viewing any maps, old or new, in the area is forbidden.

- 20 min before start: leave from quarantine to start
- 5 min before start: GPS inserted to vest (M/W21)
- 4 min before start: start call-in
- 3 min before start: emit clear
- 2 min before start: control descriptions, no attachment supplies are provided
- 1 min before start: moving to the maps, the map may be taken at the time of start

FINISH

There's a marked route from the last control to the finish. Competitor's result is determined by their punch at the finish line. In the qualifying competition, the finish line closes at 11:25. In the final competition, the finish line preliminarily closes at 18:00.

Also not-finishing competitors must register at the finish area.

COMPLAINTS

Any complaints must be made within 15 minutes of the announcement of the final results of each series (M21 and W21) for WRE series, and within 30 minutes of the finish for other series. The morning qualification range and the afternoon finals are two separate competitions. The complaints must be made in writing using the form available from the Wailing Wall and submitted to the Wailing Wall within the above-mentioned time limit. More detailed instructions can be found in the orienteering rules section and in the IOF WRE instructions.

PRIZES

In the M21 and W21 classes, the top three eligible Finnish Championship runners receive medals and product prizes, while those placing 4th to 10th receive medals. The top three overall in the WRE race also earn product prizes.



However, only orienteers who are Finnish citizens and who represent a club of an IOF member federation or foreign persons who have resided permanently in Finland at least since the beginning of the calendar year of the competition and who represent a member club of the federation will be included in the official list of results and prizes of the Finnish Championships.

PUNCHING SYSTEM

The electronic punching system Emit will be utilized for this event. Rental Emit cards are available from the organizer at a fee of 10€. Requests for Emit card rental must be submitted with the entry. Please note that failure to return a rented Emit card after the competition will incur a charge of 100€.

EMIT CARD CHECK

Participants may test their cards at the venue using the model control. Each competitor is responsible for ensuring their card functions correctly and that the correct emit number has been provided to the organizers. Card numbers are not verified prior to the start. If a competitor uses an emit card different from the one listed at the start, disqualification will result.

Emit card changes (e.g., for broken cards) are allowed if you email Keijo Viilo (keijo.viilo@gmail.com) by Friday, 19.9.2025 at 16:00. Changes requested after this must be made at competition info and will incur a 10€ fee.

Back-up patches are available in the pre-start and start areas.

ALLOWED EMIT CARDS

SSL rules permit only use of untampered emit cards. A tampered card will lead to disqualification. This includes cards with a changed battery!

RENTAL EMIT CARDS

Entries without an emit card will have an emit card reserved by the organizers. Rental cards can be picked up from info. Rental price 5€. Competitors who don't return the rental emit card are charged a 100€ fee.

MODEL EVENT



Exercises for sale on omaps.io. Closer to the competition, there will also be model event, which is designed by the course setters.

Everyone who wants to participate in the training event must notice the embargoed area when arriving at the training. Anyone seen in the embargoed area during the days leading to the competition (this will be monitored) will be disqualified.

CLIMATE

In September, Tampere typically experiences a wide range of weather conditions. Days may be pleasantly mild and sunny, with temperatures often reaching between 15°C and 20°C. However, rain and wind are also common, and cooler spells can see temperatures drop to 5°C–10°C. Participants should be prepared for variable conditions and pack accordingly.

FOOD AND BEVERAGES

The competition center has a restaurant and a grab-and-go café offering hot meals, coffee, tea, snacks, and pastries. The restaurant and café are open from 7:30 AM to 6:00 PM.

Meal options: chicken pasta, vegetarian pasta (vegan), and ham casserole.

Food will be available at 10-13 o'clock. Price without preorder: 12,00 euro.

Pre-ordered meals are to be paid for and picked up at the designated point in the competition restaurant. Please follow the signs in the competition center. The price is 11,50 euro per portion when pre-ordered (incl. salad, bread and water). Order will be paid on site, and the order will be a binding contract. More information about food pickup will be given at competition instructions.

More information: Pia Koivunen, pia.koivunen@gmail.com, +358 50 3430368.

SHOWERING AND TOILETS

There is a possibility to shower and change clothes indoors in the competition center.

FIRST AID



CHILD CARE

Muksula can be found in the competition center behind the restaurant. Follow the signs at the competition center and contact the information if necessary.

Please note that Muksula is only for those who have registered in advance.

For more information and to answer questions about Muksula, please contact: Pia Koivunen, pia.koivunen@gmail.com, 050 3430368

PHOTO AND VIDEO SHOOTING

There are photographers and recording equipment in the competition area and the centre that document the events and atmosphere of the competition. Photos of the competition can be published on the official website of the competition.

CANCELLING PARTICIPATION

Participation fees will not be refunded in case of cancellation of the competition.

LOST AND FOUND

You can inquire about items left at the competition center by email from kilpailut.suunnistus@pyrinto.fi.